

MAGNUM 8



An industry first 3-in-1: true remodel, energy-saving retrofit and new construction fixture with integrated junction box. A reliable alternative for light commercial use where longevity counts. Airtight and suitable for direct contact with insulation.

Performance

- Instant on with no warm up time
- Available in two finishes and two color temperatures
- For use with recessed housings up to 8" in diameter, where access to existing housing is available
- Long life LEDs last up to 35,000 hours, 14 times longer than incandescent lamps rated at 2,500 hours
- Energy Star compliant and c/ETL/us Listed for damp locations

Construction

- Ventilated heavy duty plastic housing and aluminum heat sink keep LEDs cool for longevity
- Sturdy spring clips hold fixture flush with ceiling
- Junction box features multiple 1/2" knockouts and clip-on cover
- Frosted polycarbonate lens diffuses light

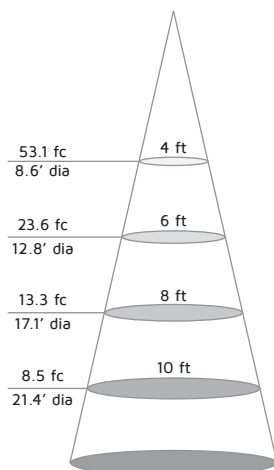
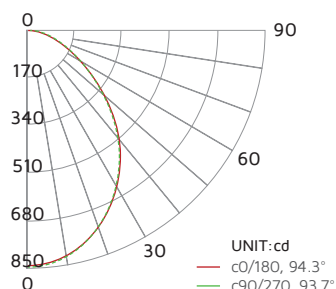
Installation

- Cut-out template included (8-1/16" hole size)
- For 4", 5" or 6" retrofit, access to the existing housing is needed to re-route supply wires to the Mag8's junction box
- Steel earthquake cable and junction box straps are for tying off

Photometrics

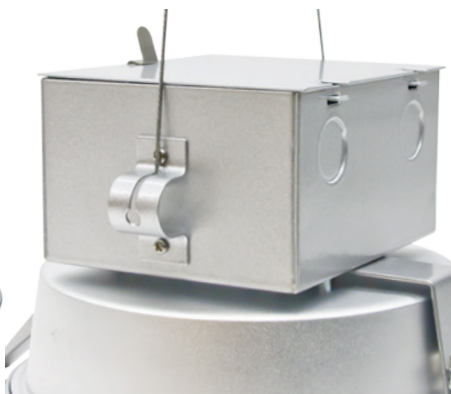
MAG8-30-WH

Luminous flux	1901Lm
Maximum intensity	849 cd
Input wattage	23W
Lumens per watt	82 LPW
Beam angle	94°



Specifications

Series	MAG8
Input voltage	120V AC, 60Hz
Color temperature	3000K / 4000K
CRI	80+
Wattage	23W
Lumens	1800Lm / 2000Lm
Beam angle	110°
Dimming	N/A
Housing	Aluminum housing, trim and j-box
Lens	Frosted polycarbonate
Rating	c/ETL/us Listed, damp locations
Dimensions	9-1/16"Dia. x 5-3/8"H
Mounting	Recessed
LED type	72 x SMD 2323 LEDs
Rated life	35,000 hrs





MAG8-30-BS

Mag 8 - Brushed Steel
3000K / 23W / 1800Lm



MAG8-30-WH

Mag 8 - White
3000K / 23W / 1800Lm

MAG8-40-BS

Mag 8 - Brushed Steel
4000K / 23W / 2000Lm

MAG8-40-WH

Mag 8 - White
4000K / 23W / 2000Lm

